

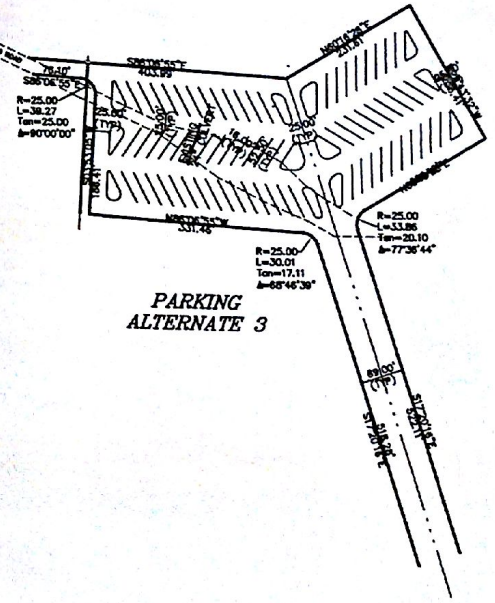
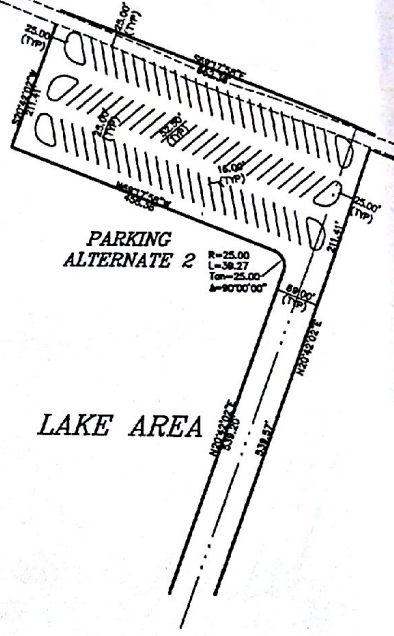
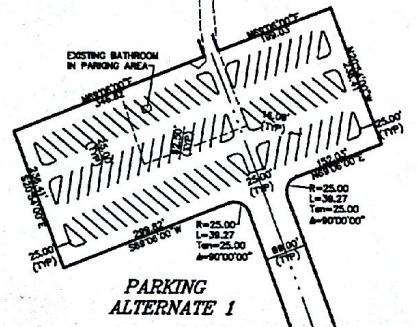


100 0 100 200
SCALE IN FEET

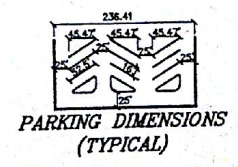
TO HEBER CITY

HIGHWAY 40

TO VERNAL



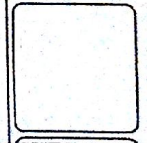
LAKE AREA



NO.	REVISIONS	DATE

BROWN CONSULTING ENGINEERS, P.C.
BCOE
 CIVIL ENGINEERING-LAND SURVEYING-LAND PLANNING
 1000 WEST 1000 NORTH
 SALT LAKE CITY, UTAH 84119
 (801) 488-8800 FAX (801) 488-8802

PROPOSED ALTERNATE PARKING/RAMP AREA
 SITE PLAN
 FOR
 CHICKEN CREEK AT STRAWBERRY RESERVOIR
 LOCATED IN SECTION 8, TOWNSHIP 37N, RANGE 11W, BL 8500M
 WASHINGTON COUNTY, UTAH



CHECKED BY: MS
 DRAWN BY: MS
 DATE: NOVEMBER 2002
 JOB NO.: 9-02

SCALE:
 1"=100'

SHEET NO.:
 2 OF 6